

# BAPOS



## Thermal Label Printer

## User Manual

## Self-Test Page:

Turn off the power first. Keep press the "Feed" button don't loose and in the meantime turn on the power. The test page will print automatically and then can loose the "Feed" button. If need to print normal paper, please restart the printer and then can in normal working status.

## Indicator lights Instructions:

Light Led Status	Printer Status
Lights off	Printer shuts down
Blue Light	Turn on the printer
Flashing Red Light	The printer is powered on but is out of paper or the label paper detection is abnormal

## Button Instructions:

Power switch	Printer Status
Power on & press FEED button 1 time	1 label paper feeding
Power on & long press FEED button 5-6s until 2 beeps	Label paper calibration and 1 label paper feeding
Power off, press and hold FEED button, keep hold the button and turn on the printer, release the FEED button until flashing red light	Print self-test page

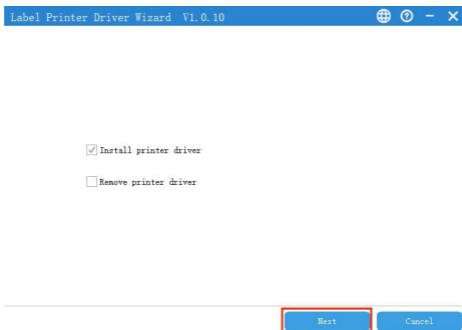
## Driver Installation on Windows by USB Connection

1.Connect with Windows via USB interface, turn on the power of printer.

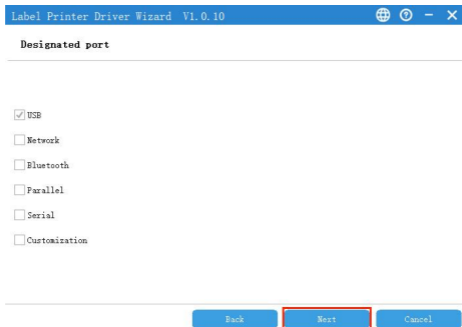
2.Double click the "LabelDriver".



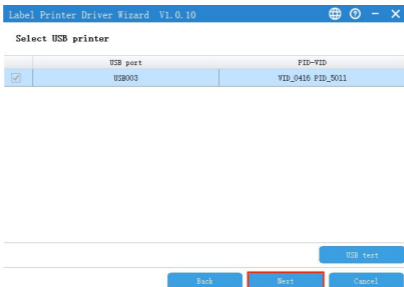
3.Click the "Next".



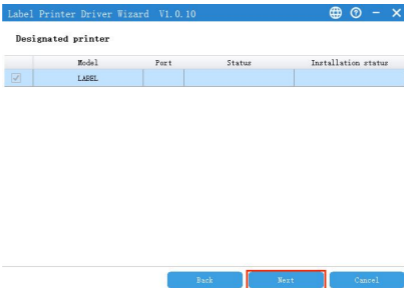
4.Choose the "USB" and Click the "Next".



## 5. Click the "Next".



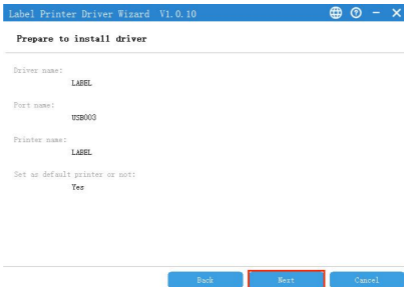
## 6. Click the "Next".



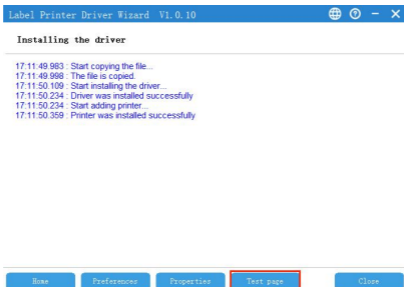
## 7. Click the "Next".



8. Click the "Next".



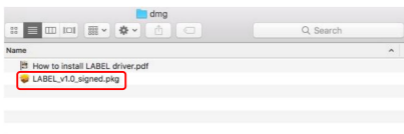
9. Install successfully and then can print test page.



Note: If the printer prompts "Printing Error", return to the "Port" option, select USB0001, or USB002, or USB003.....and test it again.

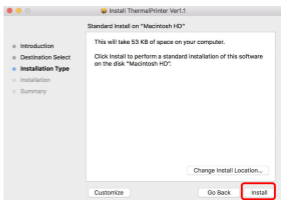
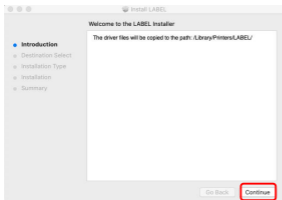
## Driver Installation on Mac by USB Connection

1. Double click the LABEL .dmg.
2. Double click "LABEL\_V1.0\_signed.pkg" to install the driver.



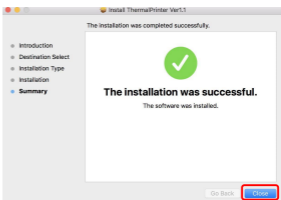
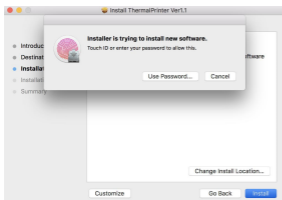
3. Click "Continue" button.

4. Click "Install".



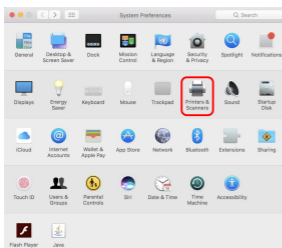
5. Use Touch ID or Enter your password.

6. Click "Close" to finish.



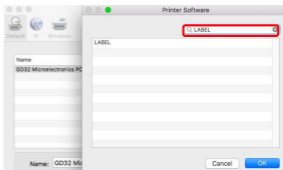
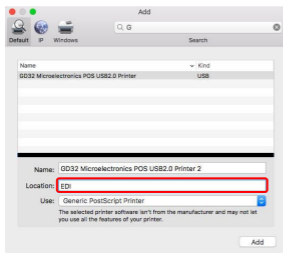
7. Open "System Preferences", and click "Printers and Scanners".

8. Click "+" to add a new printer.



9. Turn on your printer, and choose "LABEL", select "Select Software" under "Use" drop down menu.

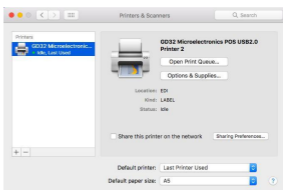
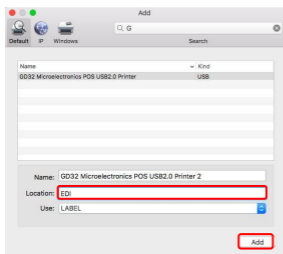
10. Input "LABEL", and choose "LABEL".



11. Click "Add".

12. Use Touch ID or enter your password.

13. Finish.



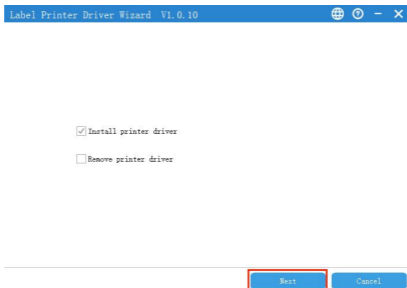
## Driver Installation on Windows by LAN Connection

1. Connect with Windows via LAN interface, turn on the power of printer.

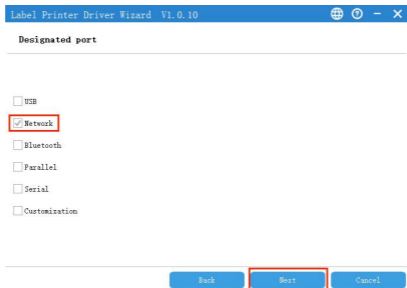
2. Double click the "LabelDriver".



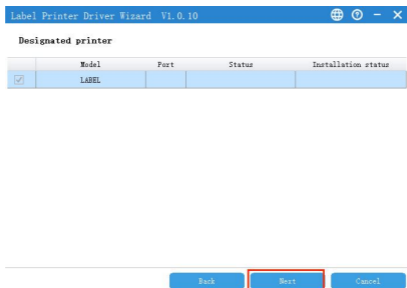
### 3. Click the "Next".



### 4. Choose the "Network" and Click the "Next".



### 5. Click the "Next".



## 6. Click the "Next".

Label Printer Driver Wizard V1.0.10

Enter the IP address and the IP port name

IP address: 192.168.1.100

Port name: 192.168.1.100\_4

Back Next Cancel

## 7. Click the "Next".

Label Printer Driver Wizard V1.0.10

Designated printer name

Enter the name of the printer

Printer name: LABEL

Use this printer as the default printer

Back Next Cancel

## 8. Click the "Next".

Label Printer Driver Wizard V1.0.10

Prepare to install driver

Driver name: LABEL

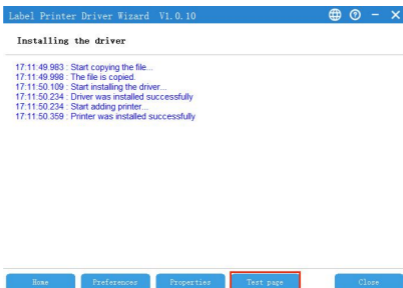
Port name: 192.168.1.100\_4

Printer name: LABEL (1)

Set as default printer or not: Yes

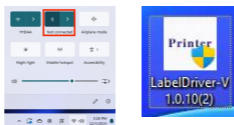
Back Next Cancel

## 9. Install successfully and then can print test page.

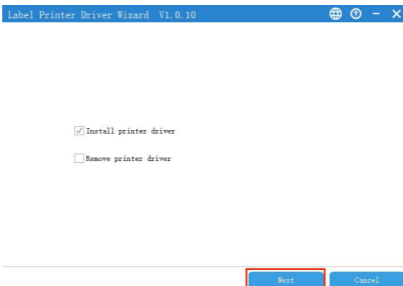


## Driver Installation on Windows by Bluetooth Connection

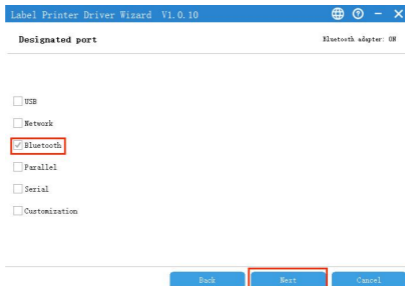
1. Turn on the power of printer, enable the bluetooth function on PC.
2. Double click the "LabelDriver".



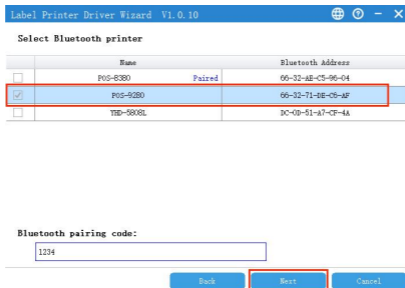
3. Click the "Next".



#### 4. Choose the "Bluetooth" and Click the "Next".



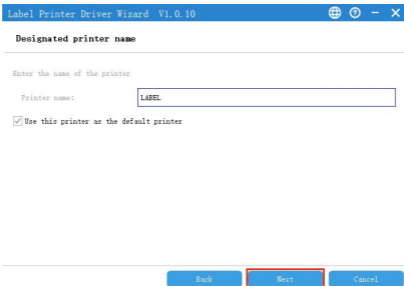
#### 5. Choose the "POS-9280" and click the "Next".



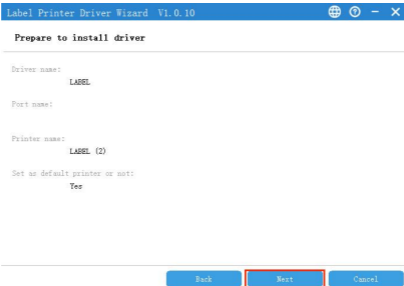
#### 6. Click the "Next".



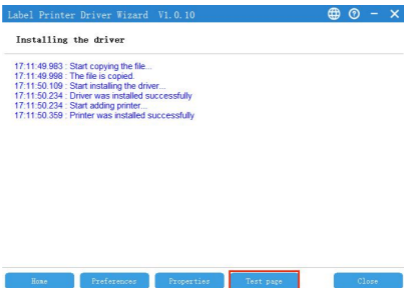
## 7. Click the "Next".



## 8. Click the "Next".

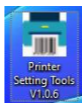


## 9. Install successfully and then can print test page.

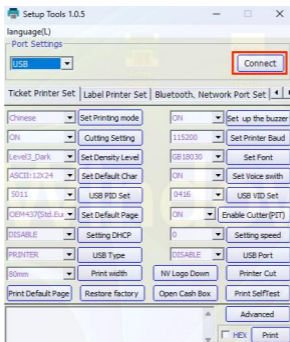


# Driver Installation on Windows by Wifi Connection

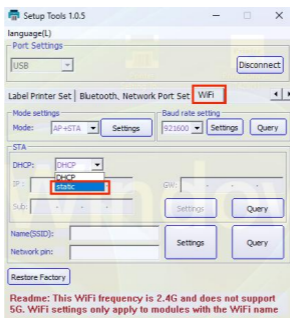
- 1.Connect with Windows via USB interface, turn on the power of printer and enable the Wifi on PC.
- 2.Double Click the tool "Printer Setting Tools".



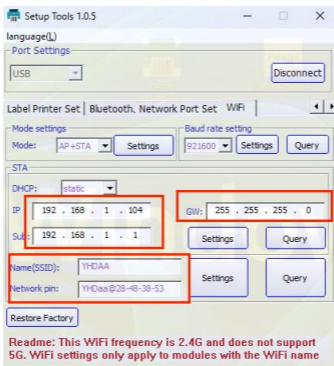
- 3.Click the "Connect".



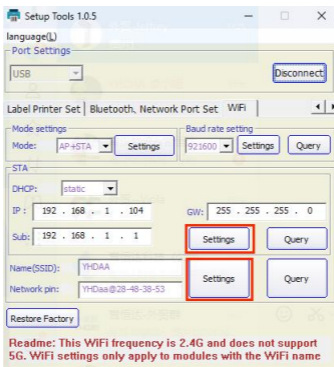
- 4.Click the "Wifi" and choose the "static".



## 5. Set the IP address and link your own local wifi.



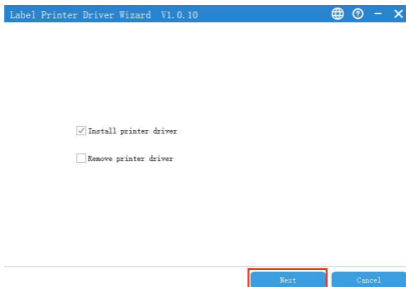
## 6. Click the "setting".



## 7. Double click the "LabelDriver".



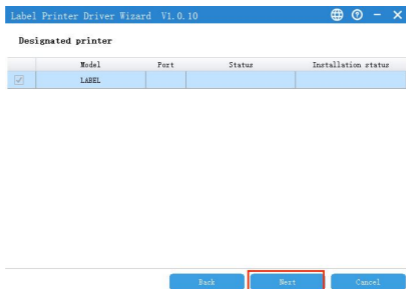
8. Click the "Next".



9. Choose the "Network" and Click the "Next".



10. Click the "Next".



11.Type the IP address we set and click the "Next".

Label Printer Driver Wizard V1.0.10

Enter the IP address and the IP port name

IP address: 192.168.1.104

Port name: 192.168.1.104

Back Next Cancel

12.Click the "Next".

Label Printer Driver Wizard V1.0.10

Designated printer name

Enter the name of the printer

Printer name: LABEL

Use this printer as the default printer

Back Next Cancel

13.Click the "Next".

Label Printer Driver Wizard V1.0.10

Prepare to install driver

Driver name: LABEL

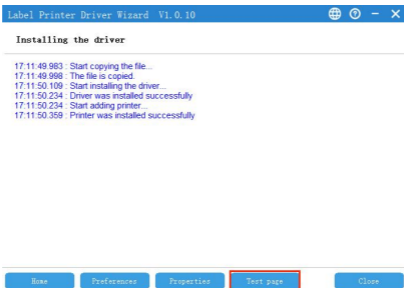
Port name: 192.168.1.104

Printer name: LABEL (3)

Set as default printer or not: Yes

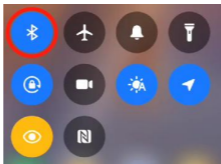
Back Next Cancel

## 14.Install successfully and then can print test page.

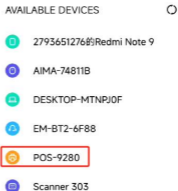
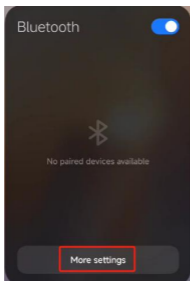


## Label Editing Software with Android System via Bluetooth Connection

- 1.Turn on the power of printer.
- 2.Turn on the bluetooth.

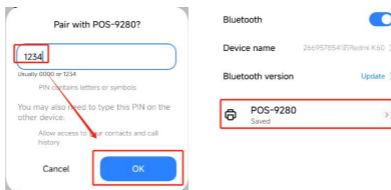


- 3.Click the "More Setting".
- 4.Click the "POS-9280".



5.Type the pin code "1234" and then click the "OK".

6.Pair Successful.



7.Open the label editing software App, please scan below QR code to download the APP.



4Barcode

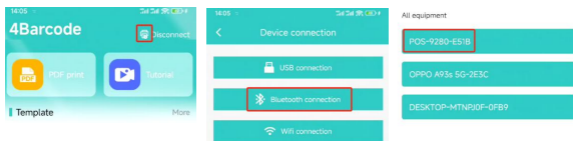
Android editing software

Install Password:1234

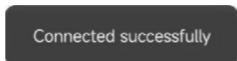
8.Click the printer symbol.

9.Choose the "Bluetooth Connection".

10.Choose the "POS-9280".



11.Connection Successful.



## Label Editing Software with IOS System via Bluetooth Connection

1.Turn on the power of printer.

2.Turn on the bluetooth.



3. Open the label editing software App, please scan below QR code to download the APP.

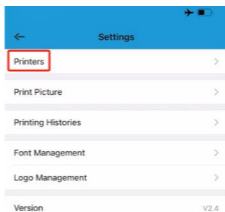
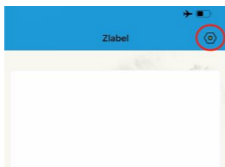


Zlabel

IOS editing software  
Install Password:1234

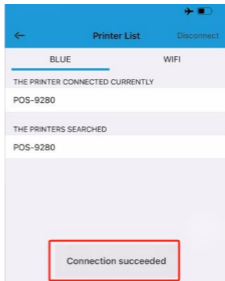
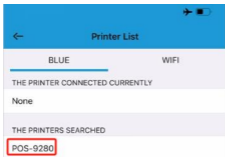
4. Click the setting symbol.

5. Choose the "Printers".



6. Choose the POS-9280.

7. Bluetooth connect successful.



## **1.Label Calibration Method:**

For the paper is skiped or continuous printing and never stop, The printer should be do the calibration, the method are as follows: Put the paper into the printer and power on the printer, when the power light is on, press and hold the "FEED" button for 5-6 seconds, till to the led light flashes and the buzzer beeps, then release the FEED button. After that, restart the printer and take a test.

## **2.If the following cases occur after calibration:**

(1)With paper, but the printer reports error:

When this happens, take away the paper and power off the printer first, and then power on the printer, once the red light flashes then long press the "FEED" button immediately, release it when the red light flashes again and the buzzer beeps, after that, wait 2 seconds, then restart the printer and test it again.

(2)Without paper, but the printer don't report error:

When this happens, take away the paper, power on the printer and press and hold the "FEED" button for 5-6 seconds, till to the red light flashes and the buzzer beeps in two times, then release the button, after that, restart the printer and have a test.