

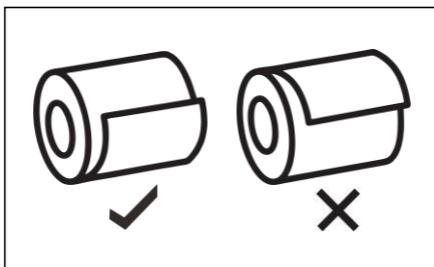
BEPOS



Thermal Receipt Printer

User Manual

Remove the used roll paper core if any, and insert the roll paper.
The correct direction of the paper is shown in the illustration below.



Self-Test Page:

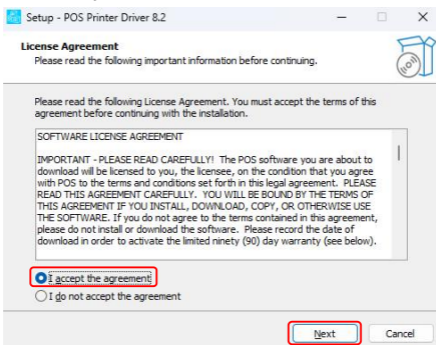
Turn off the power first. Keep press the "Feed" button don't loose and in the meantime turn on the power. The test page will print automatically and then can loose the "Feed" button. If need to print normal paper, please restart the printer and then can in normal working status.

Driver Installation for Windows by USB Connection

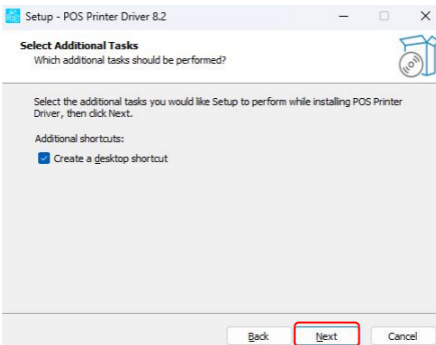
1. Connect with Windows via USB interface, turn on the power of printer.
2. Double click the "POS Printer Driver".



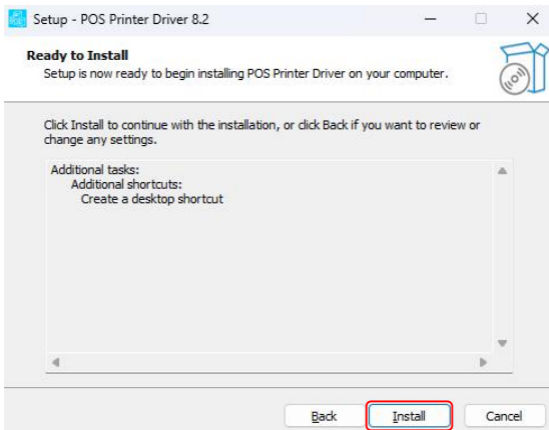
3. Choose the "Accept" and click the "Next".



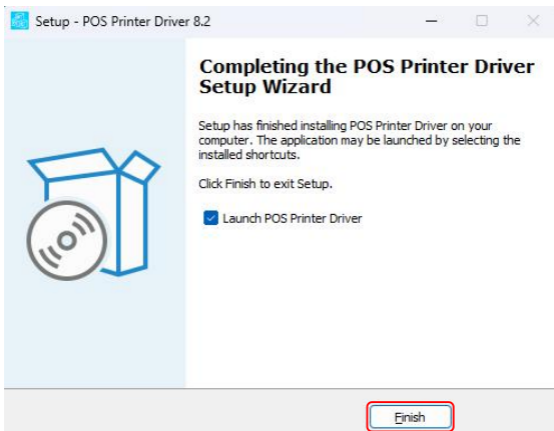
4. Click the "Next".



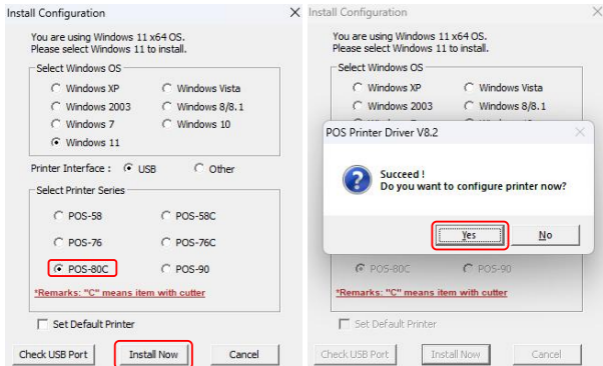
5. Click the "Install".



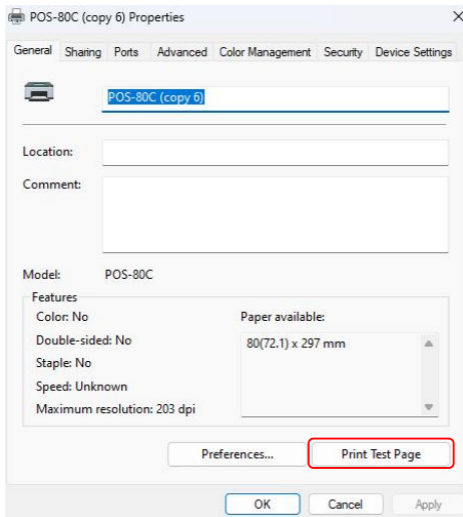
6. Click "Finish".



7. Choose the "POS-80C", click the "Install Now", click the "Yes".

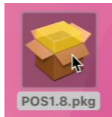


8. Installation Successful! You could print the test page now.

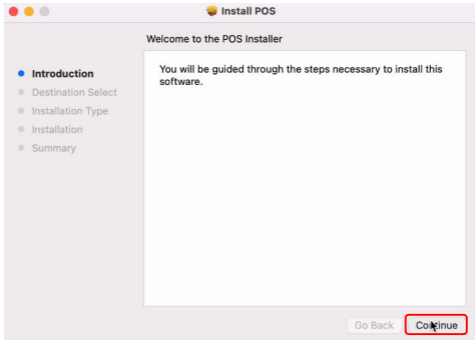


Driver Installation for Mac by USB Connection

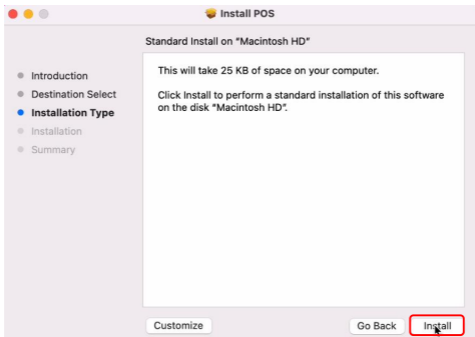
1. Double click the "POS1.8.pkg".



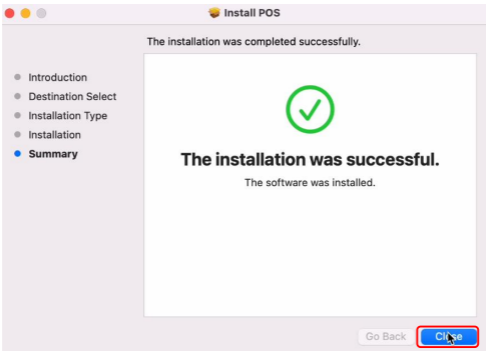
2. Double click the "Continue".



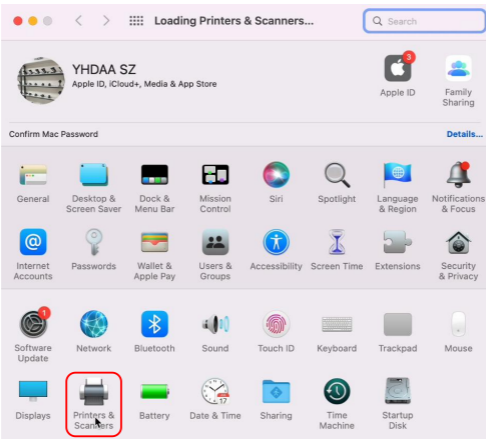
3. Double click the "Install" and type the password(your own mac password)



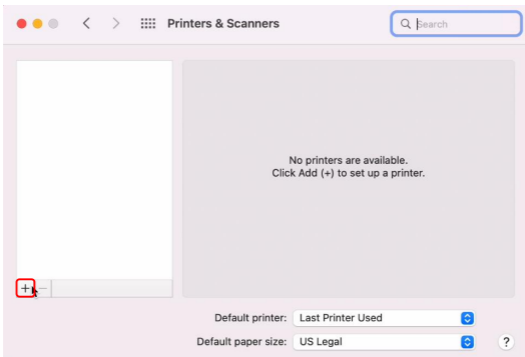
4. Click the "Close".



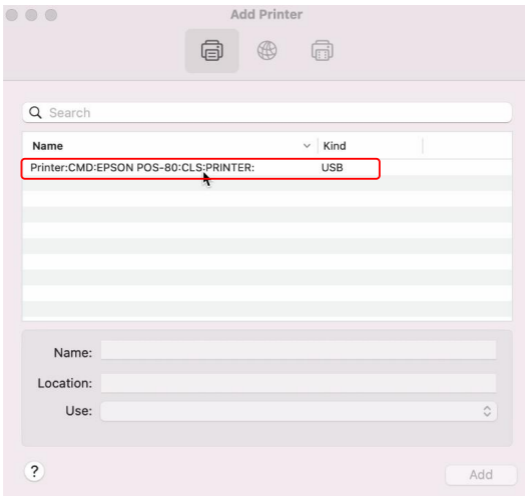
5. Choose the "System Preferences", and click the "Printers and Scanners".



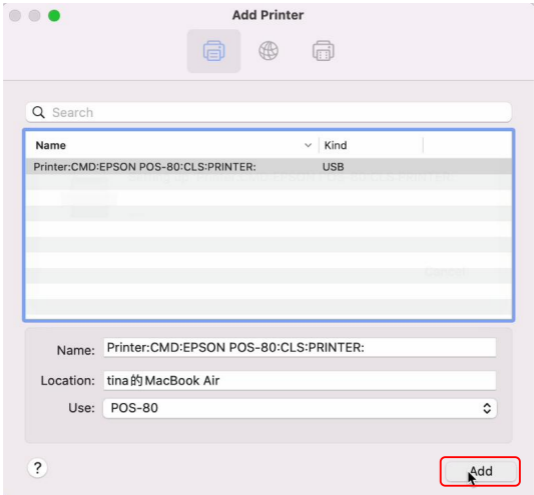
6. Click the "+".



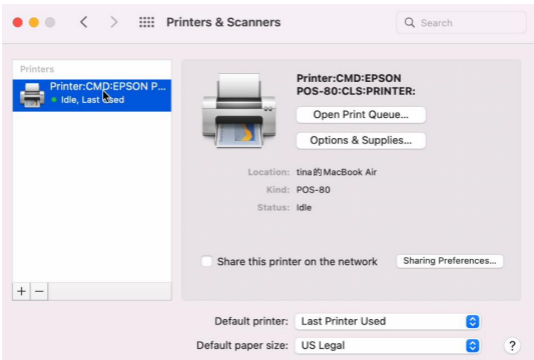
7. Click the "POS80 printer USB" and wait a few seconds, it will appear data.



8. Click the "Add" and wait a few seconds, it will configure automatically.



9. Installation Successful.



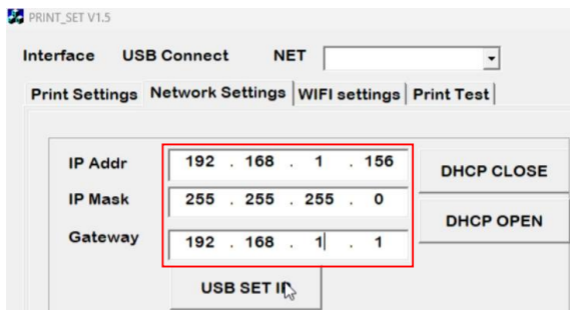
LAN Port Driver Installation

1. Get the IP address from the Self-Test Page.

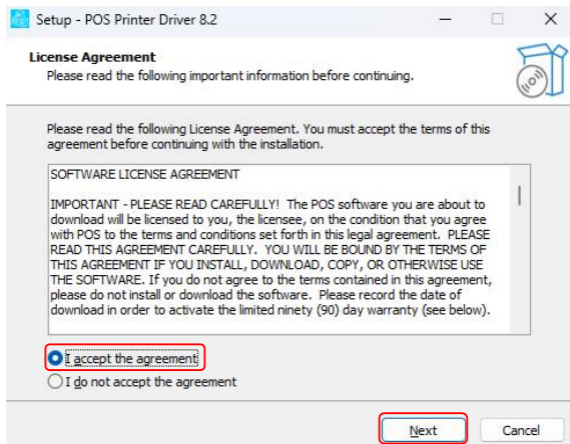
Switch off the printer then press "FEED" button and do not release.

Press the "POWER" button at the same time till the "ERROR" indicators on, then release the button and the self-test page will be printed out.

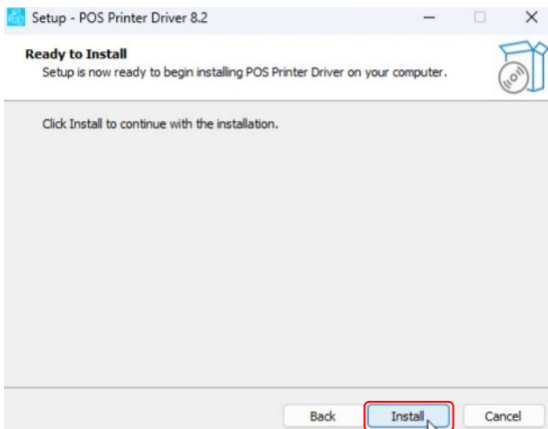
The Default IP Address of our printer is: 192.168.1.156



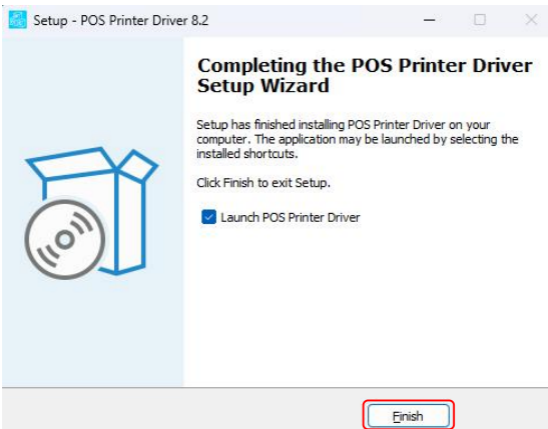
2. Choose the "Accept" and click the "Next".



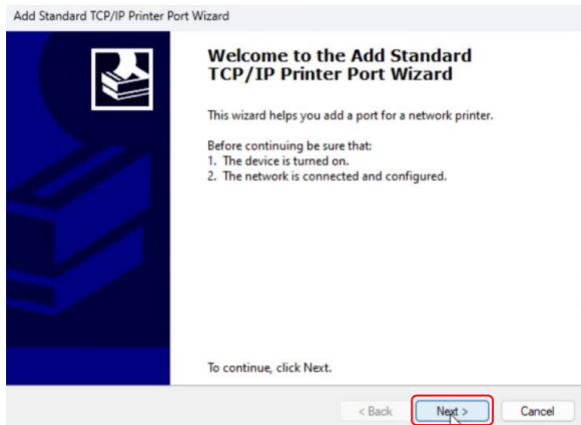
3. Click "Install".



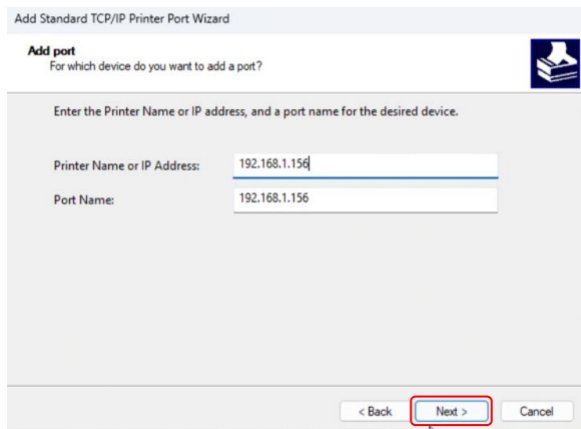
4. Click the "Finish".



5. Open Printer Driver "Properties" and click "Ports". Select "Add Port" we can see below image:




6. Click "Next", and enter into the printer IP address:



7.Next and choose "Generic Network Card" then click Next.

Add Standard TCP/IP Printer Port Wizard

Additional port information required
The device could not be identified.



The device is not found on the network. Be sure that:

1. The device is turned on.
2. The network is connected.
3. The device is properly configured.
4. The address on the previous page is correct.

If you think the address is not correct, click Back to return to the previous page. Then correct the address and perform another search on the network. If you are sure the address is correct, select the device type below.

Device Type


Standard Custom

Generic Network Card

< Back **Next >** Cancel

8.Then you can check the image as below:

Add Standard TCP/IP Printer Port Wizard



Completing the Add Standard TCP/IP Printer Port Wizard

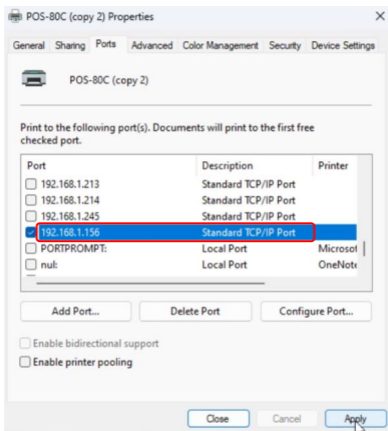
You have selected a port with the following characteristics.

SNMP:	No
Protocol:	RAW, Port 9100
Device:	192.168.1.156
Port Name:	192.168.1.156
Adapter Type:	Generic Network Card

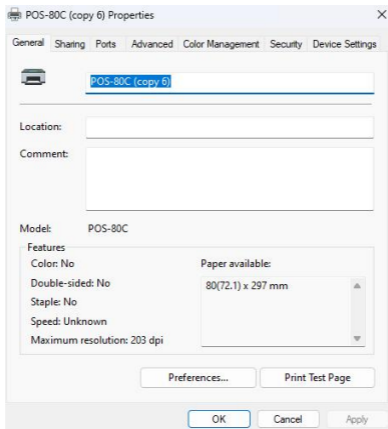
To complete this wizard, click Finish.

< Back **Finish** Cancel

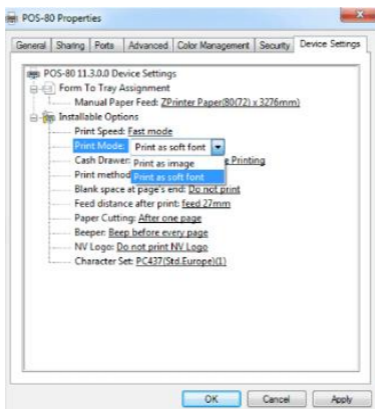
9. Click finished and we can check the added ports as below image:



10. Let's back to "General" and click "Print Test Page", if the print test page works well, that mean all setting is OK.



11. We can also change the setting by "Device Setting" (print method setting, cash drawer setting, paper cutter setting etc)-As below image shown:

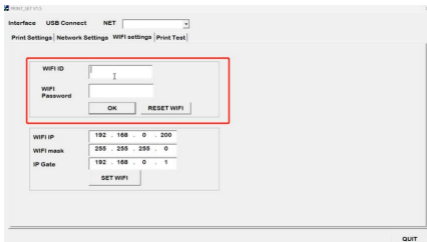


WiFi Driver Installation

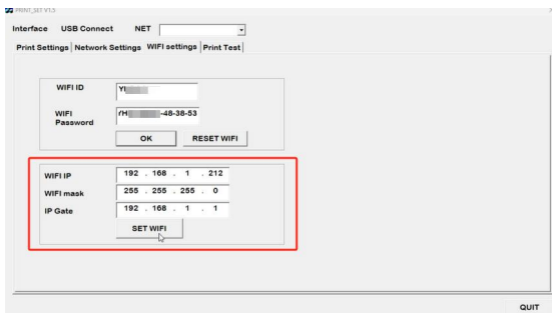
1. Power on the printer.
2. Use the tool.



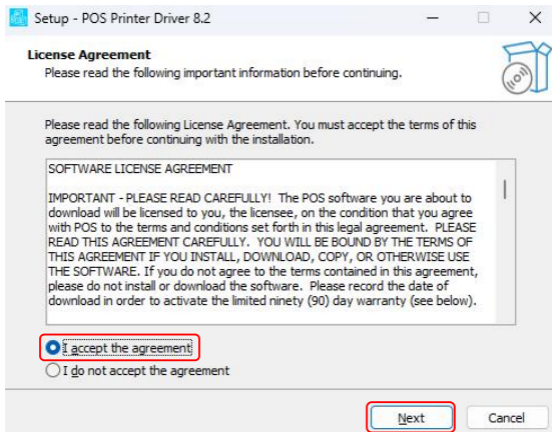
3. Type your own local wifi network account and password.



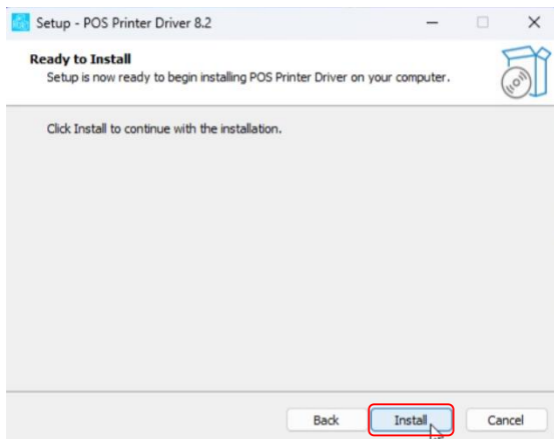
4. Set the IP address and gate.



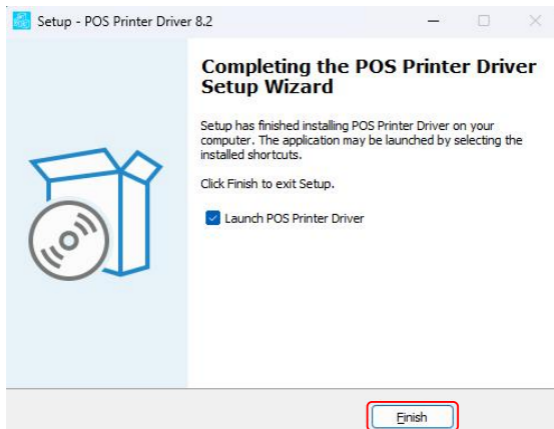
5. Choose the "Accept" and click the "Next".



6. Click "Install".



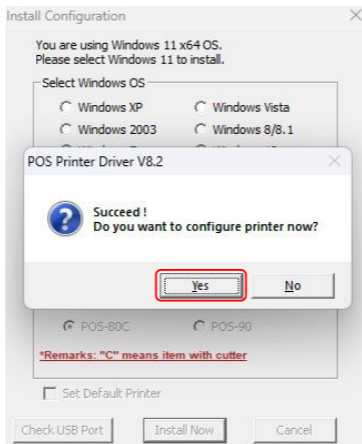
7. Click the "Finish".



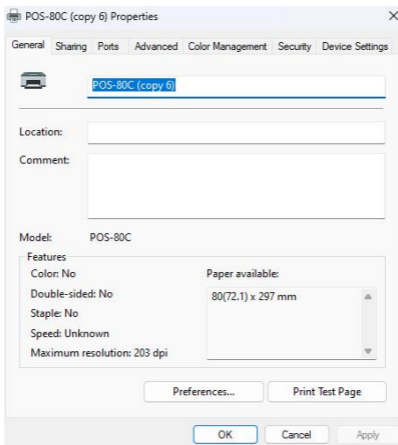
8. Choose the "POS-80C", click the "Install Now".



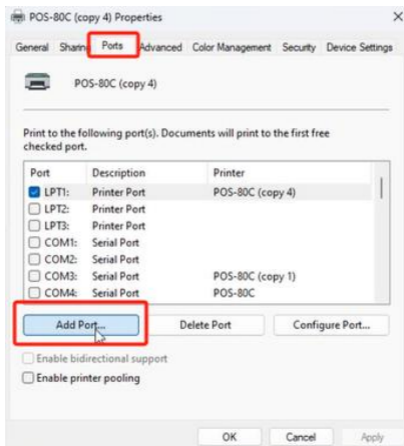
9. Click the "Yes".



10. Install the driver.



11. Add the Port.



12.Type the IP we set.

Add Standard TCP/IP Printer Port Wizard

Add port
For which device do you want to add a port?

Enter the Printer Name or IP address, and a port name for the desired device.


Printer Name or IP Address:

Port Name:

< Back Next > Cancel


13.Driver Installation complete.

Bluetooth & devices > Printers & scanners > POS-80C (copy 4)

 **POS-80C (copy 4)** Printer status: 1 document(s) in queue Remove

Printer settings

- Open print queue ⓘ
- Print test page ⓘ
- Run the troubleshooter ⓘ
- Printer properties ⓘ
- Printing preferences
Orientation, page order, pages per sheet, borders, paper source ⓘ
- Hardware properties ⓘ

 Get help